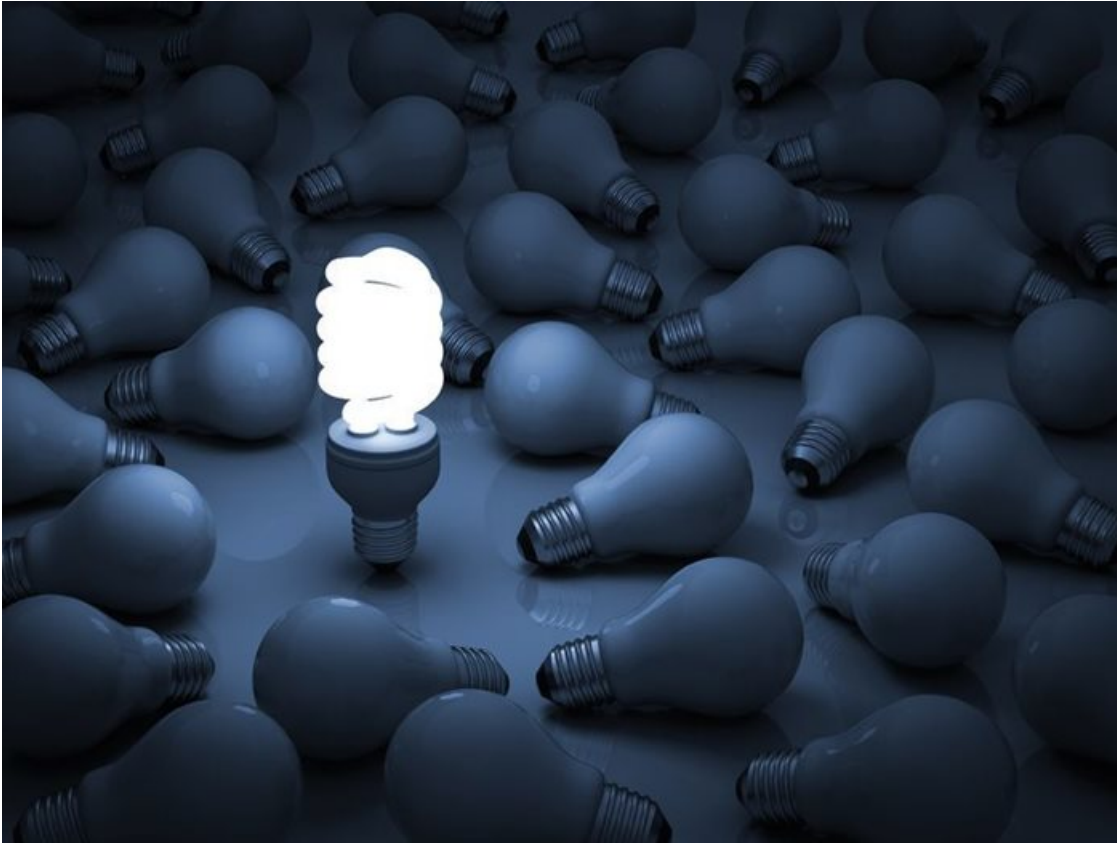


Stage 2 load shedding to be implemented as grid loses 17,933MW

Eskom has announced that stage two load shedding will be implemented from 4pm this afternoon following a shortage of generating capacity.



Source: amasterpics123 © [123RF.com](https://www.123RF.com)

On Tuesday morning, the power utility warned that the power system was under severe constraint. At least 17,933MW of energy has been lost to breakdowns.

“This morning a generation unit at Kusile Power Station tripped, adding to the constraints. A unit each at Matimba and Arnot power stations failed to return to service as previously anticipated,” Eskom said.

The power utility said although it plans to halt load shedding on Wednesday morning, it may be extended.

“These constraints are expected to persist for the rest of the week which may require the load shedding to be extended. We are currently utilising emergency generation reserves extensively to supplement supply,” the utility said.

For more, visit: <https://www.bizcommunity.com>