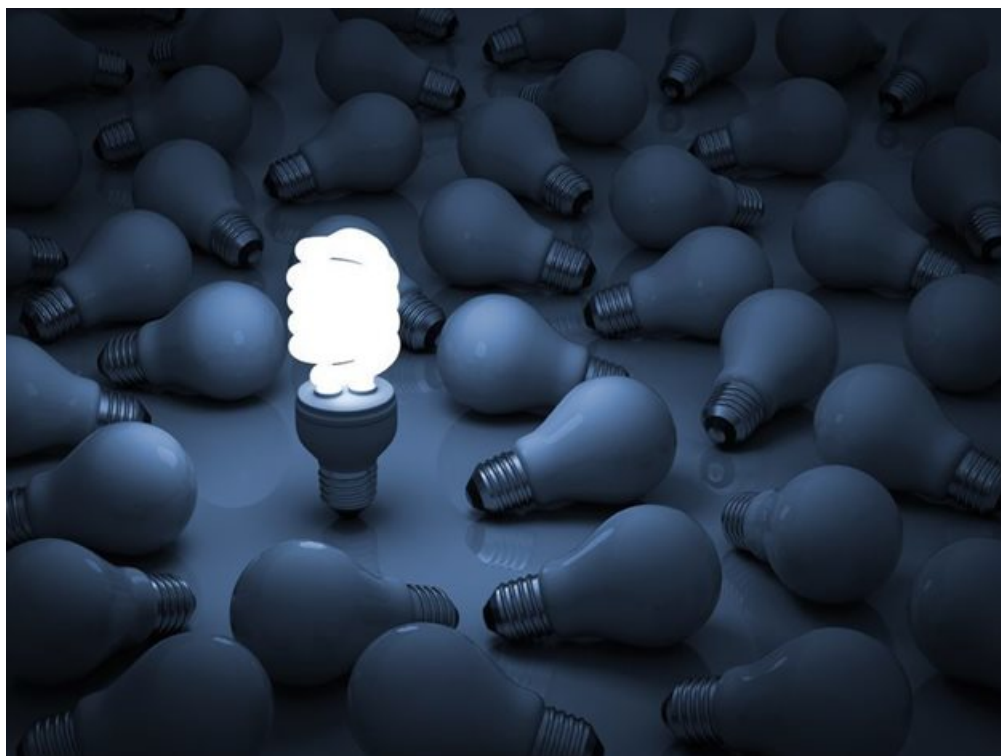


Load shedding to continue on Wednesday

Eskom will again implement Stage 2 load shedding which is expected to get underway at 10pm tonight. Wednesday's load shedding marks day two of load shedding after the power utility announced that it would cut power on Tuesday into Wednesday morning.



© amasterpics123 – [123RF.com](https://www.123RF.com)

Load shedding is expected to conclude at 5am tomorrow.

In a statement on Tuesday, the power utility said load shedding is necessary to preserve emergency generation reserves in preparation for higher demand expected in January as economic activity resumes.

“During this period, Eskom will continue to pursue increased reliability maintenance as planned and previously communicated.

“We currently have 9,745MW on planned maintenance, while another 11,346MW capacity is unavailable due to unplanned maintenance,” it said.

For more, visit: <https://www.bizcommunity.com>